

Synergies and Conflict: Offshore Wind Governance in Linked Local, State, National and International Contexts

Panel 5: Legal, Economic, and Technological Issues for Multi-use Offshore Development

March 19, 2019

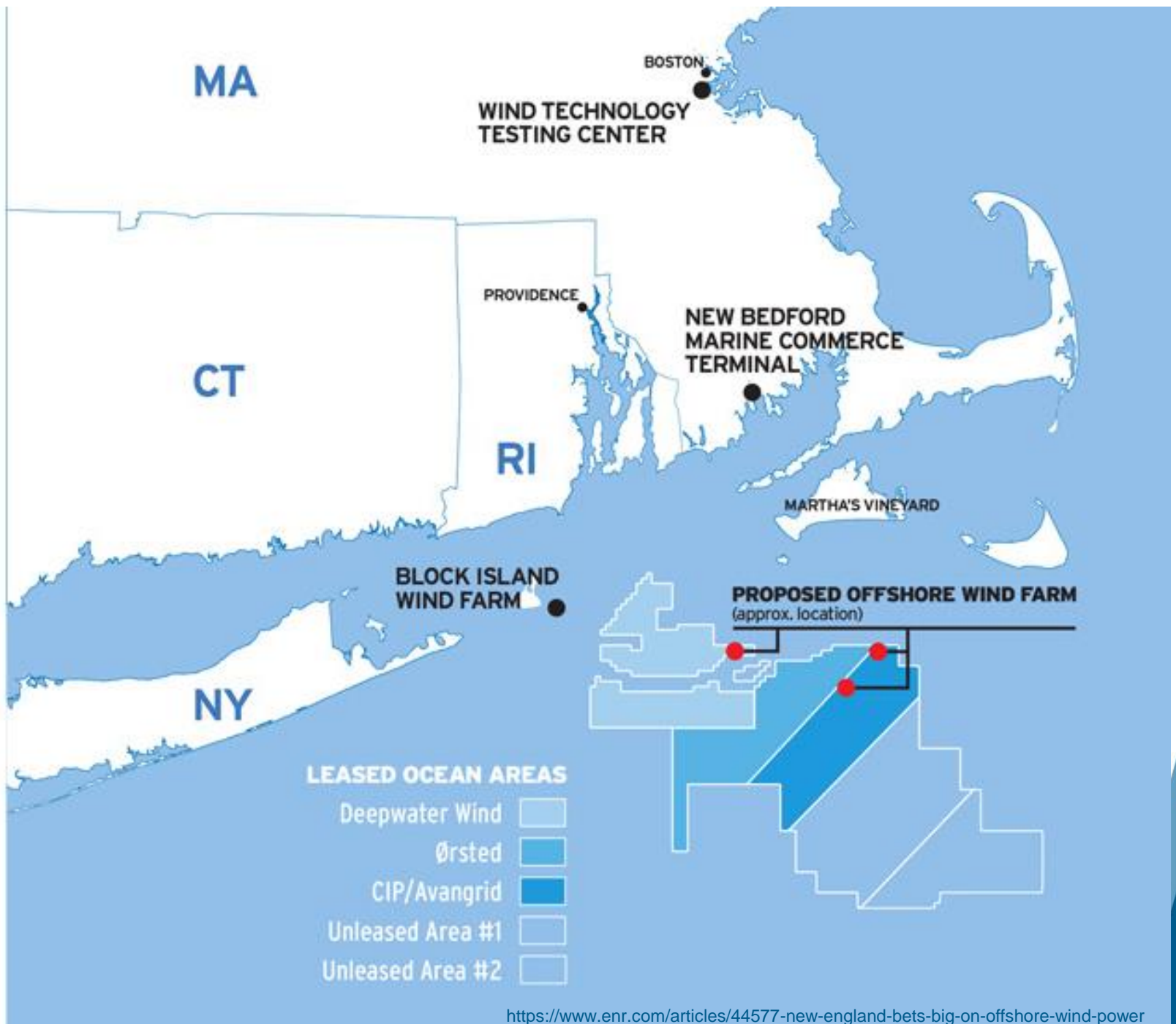
David W. Cash, Ph.D.
Dean

John W. McCormack Graduate School of Policy and Global Studies
University of Massachusetts Boston
100 Morrissey Blvd.
Boston, MA 02125-3393 USA
Office: +1-617-287-5511
Cell: +1-617-794-9431



Northeastern University



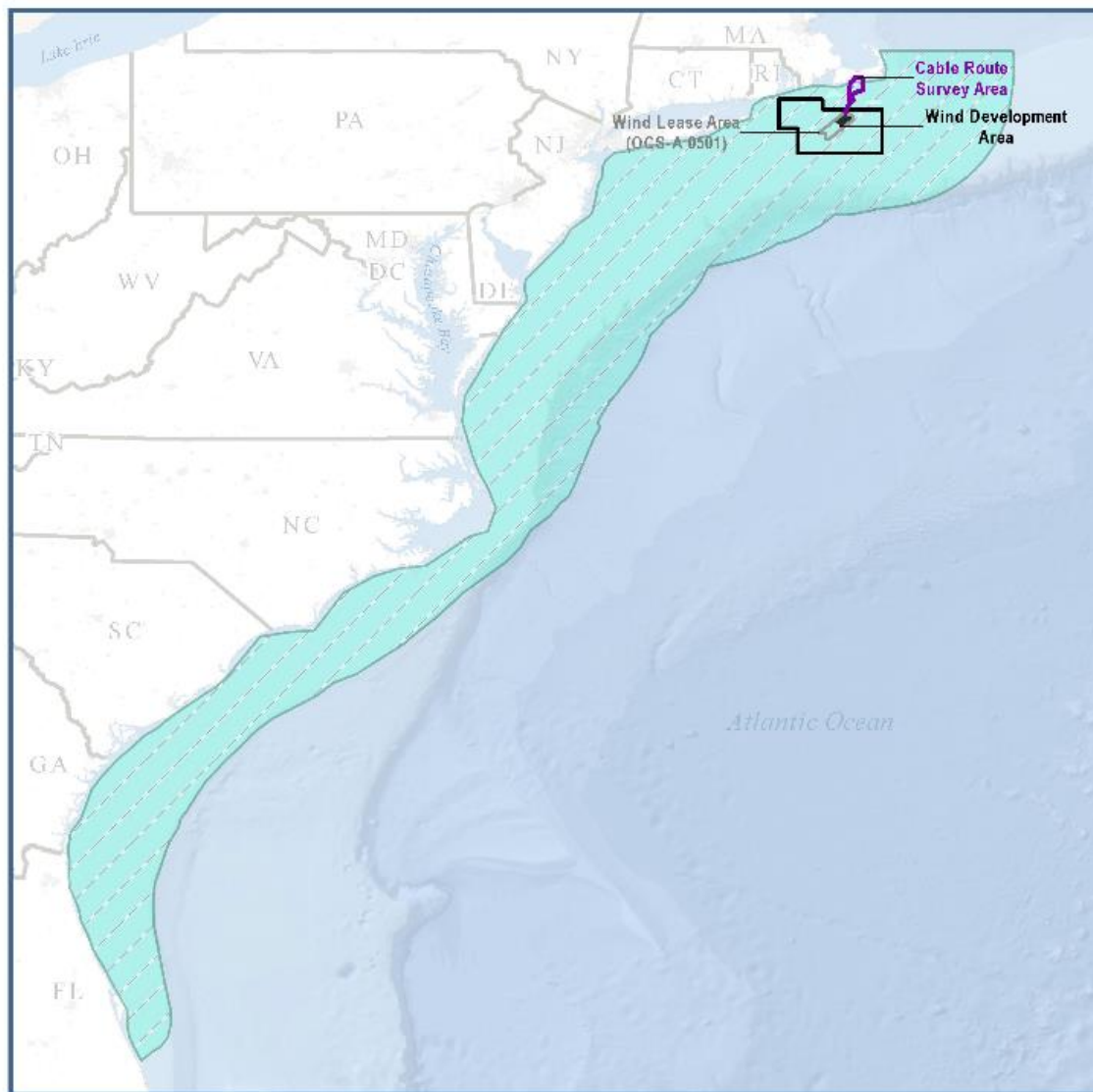


LEGEND

- Eastern Onshore Export Cable Route
- Eastern Variant 4: Great Island
- Western Onshore Export Cable Route
- Eelgrass - 2015 DEP Survey

Scale 1:42,000 0 875 1,750 3,500
1 inch = 3,500 feet Feet





Service Layer Credits: Esri, DeLorme, GEBCO, NOAA NGDC, and other contributors
 LaBrecque et al. 2015; ESRI 2017; BOEMRE 2017; E&E 2017

Map Coordinate System: GCS NAD83 (2011)


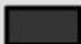






0 25 50 100 Nautical Miles
 0 50 100 Kilometers


LEGEND

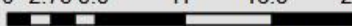
- State Boundary
- County Boundary
- Lease Area
- Wind Development Area
- Northeast Large Pelagic Survey Collaborative Aerial and Acoustic Surveys for Large Whales and Sea Turtles Study Area
- Cable Route Survey Area
- North Atlantic Right Whale Biologically Important Area for migration

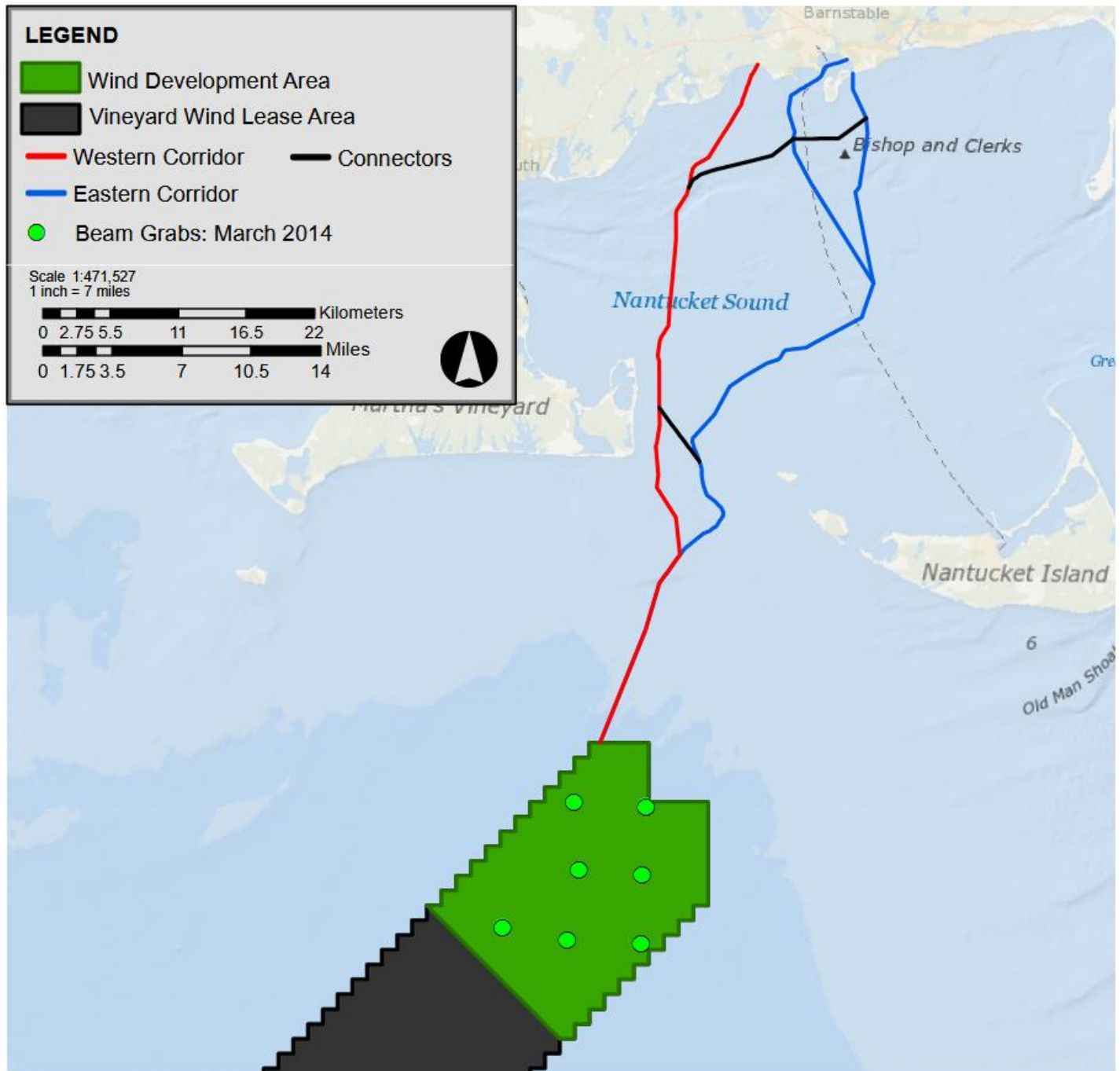
LEGEND

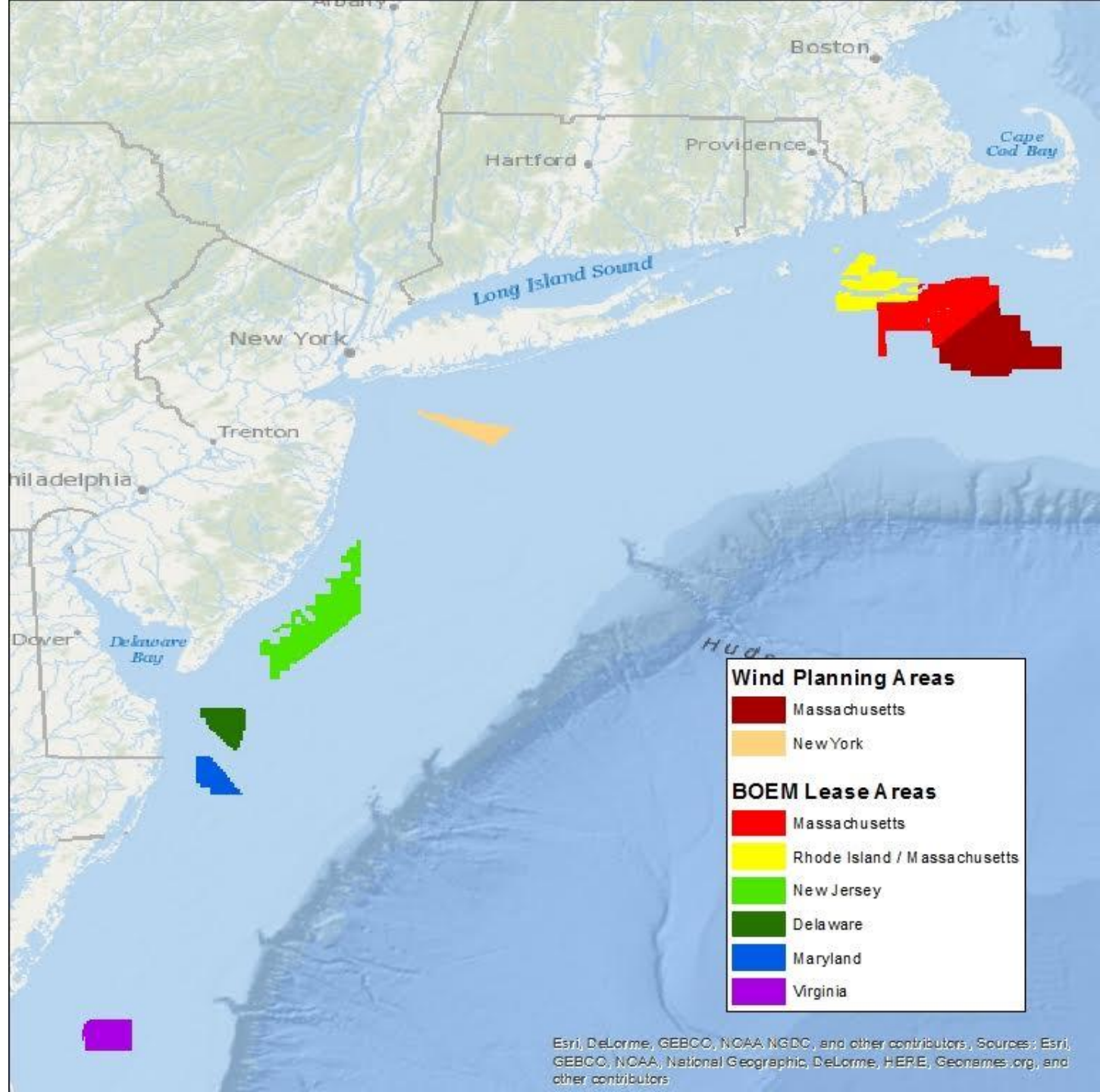
-  Wind Development Area
-  Vineyard Wind Lease Area
-  Western Corridor
-  Eastern Corridor
-  Connectors
-  Beam Grabs: March 2014

Scale 1:471,527
1 inch = 7 miles

 Kilometers
0 2.75 5.5 11 16.5 22

 Miles
0 1.75 3.5 7 10.5 14





Esri, DeLorme, GEBCO, NOAA NGDC, and other contributors. Sources: Esri, GEBCO, NOAA, National Geographic, DeLorme, HERE, Geonames.org, and other contributors.

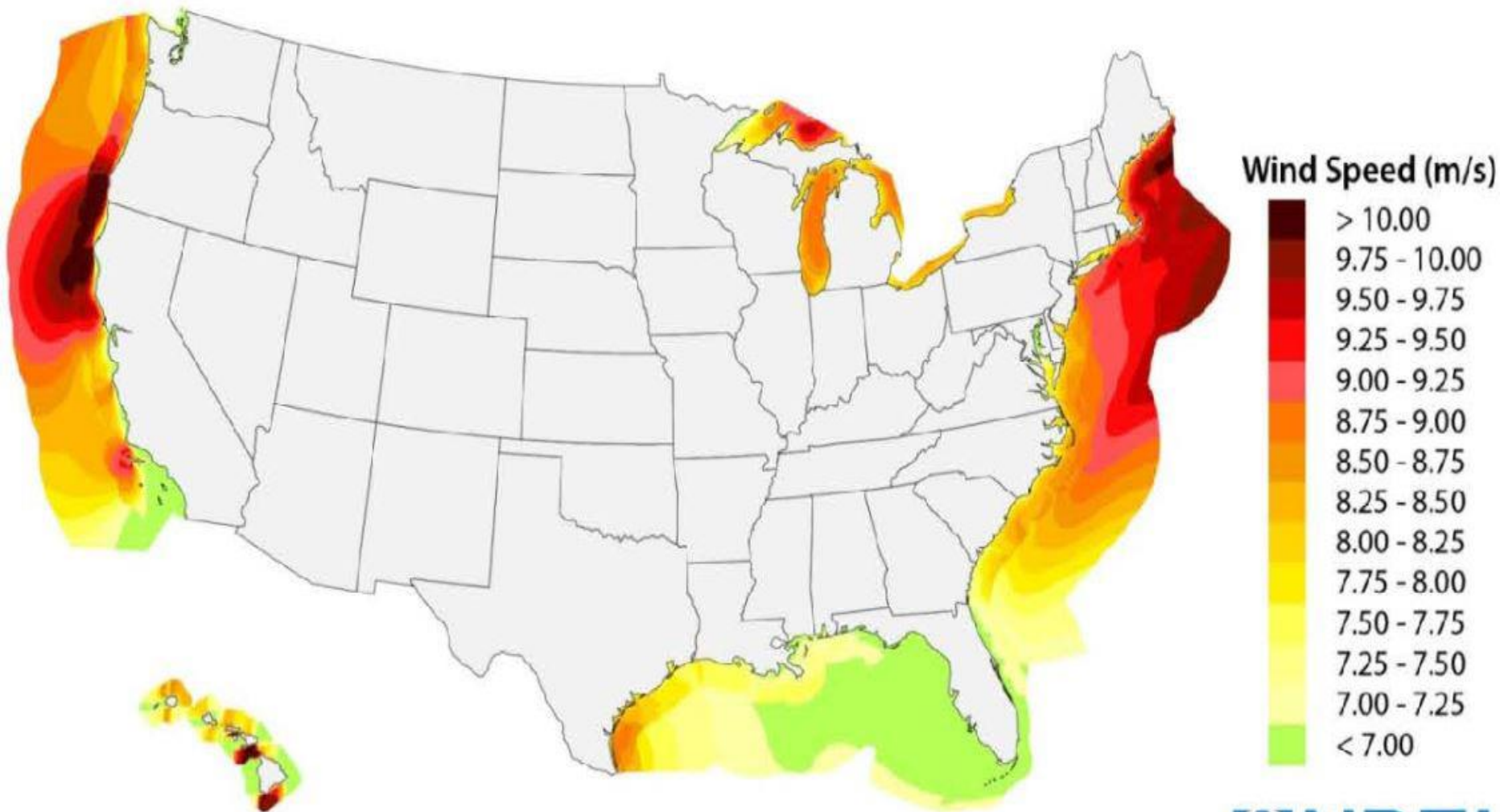
**Ontario Independent
Electricity System Operator**

**New Brunswick
System Operator**

**ISO New
England
New York ISO**

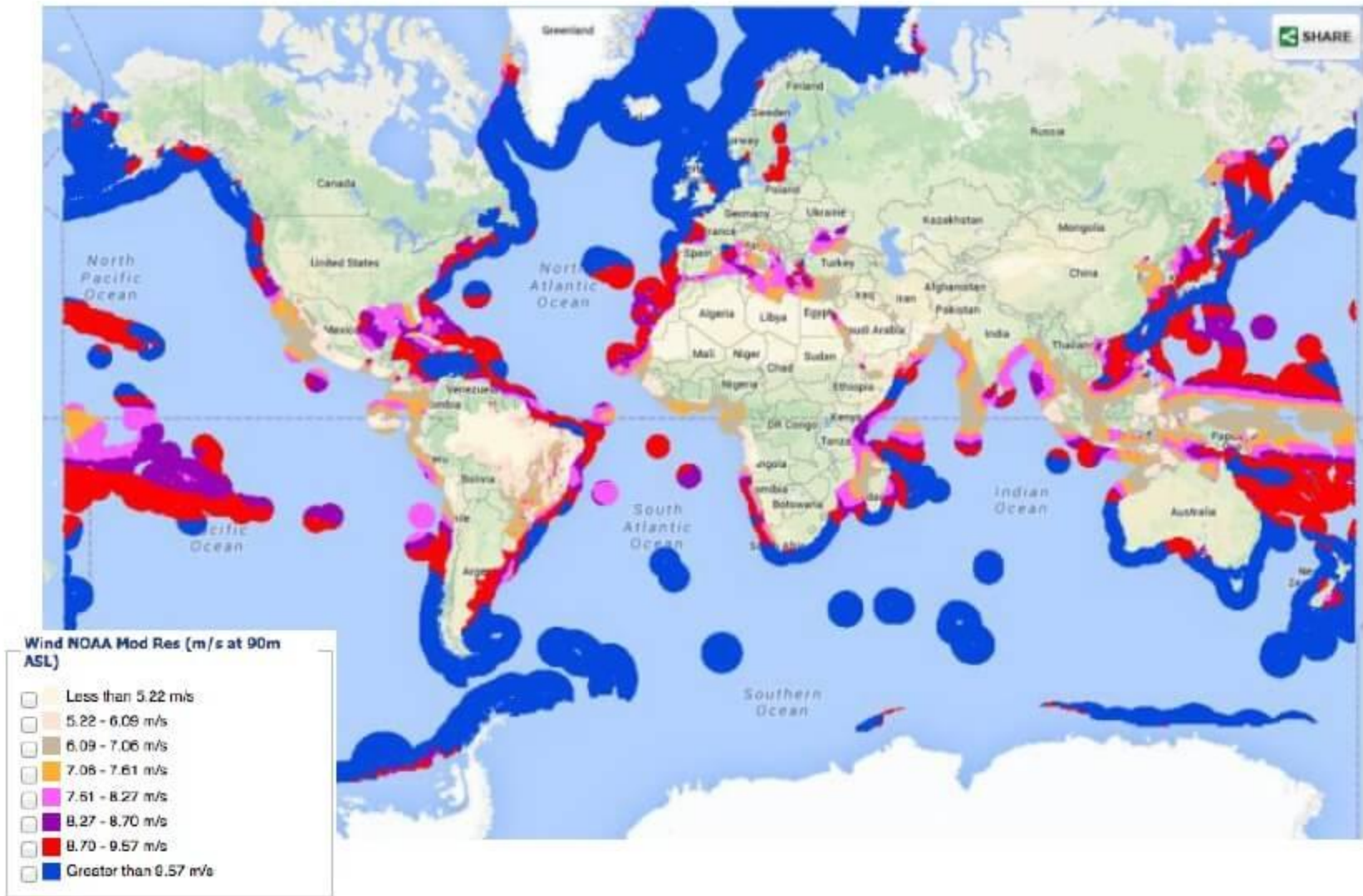
**PJM
Interconnection**

IRC
ISO/RTO Council



Data Source: AWS Truepower 0-50nm; NREL WIND Toolkit beyond 50nm.

Global average wind speeds at 90m

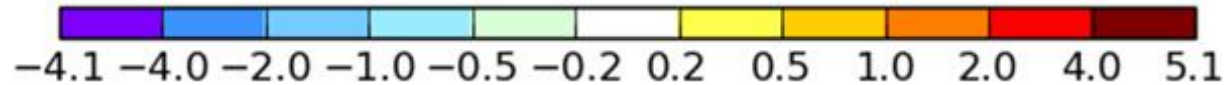
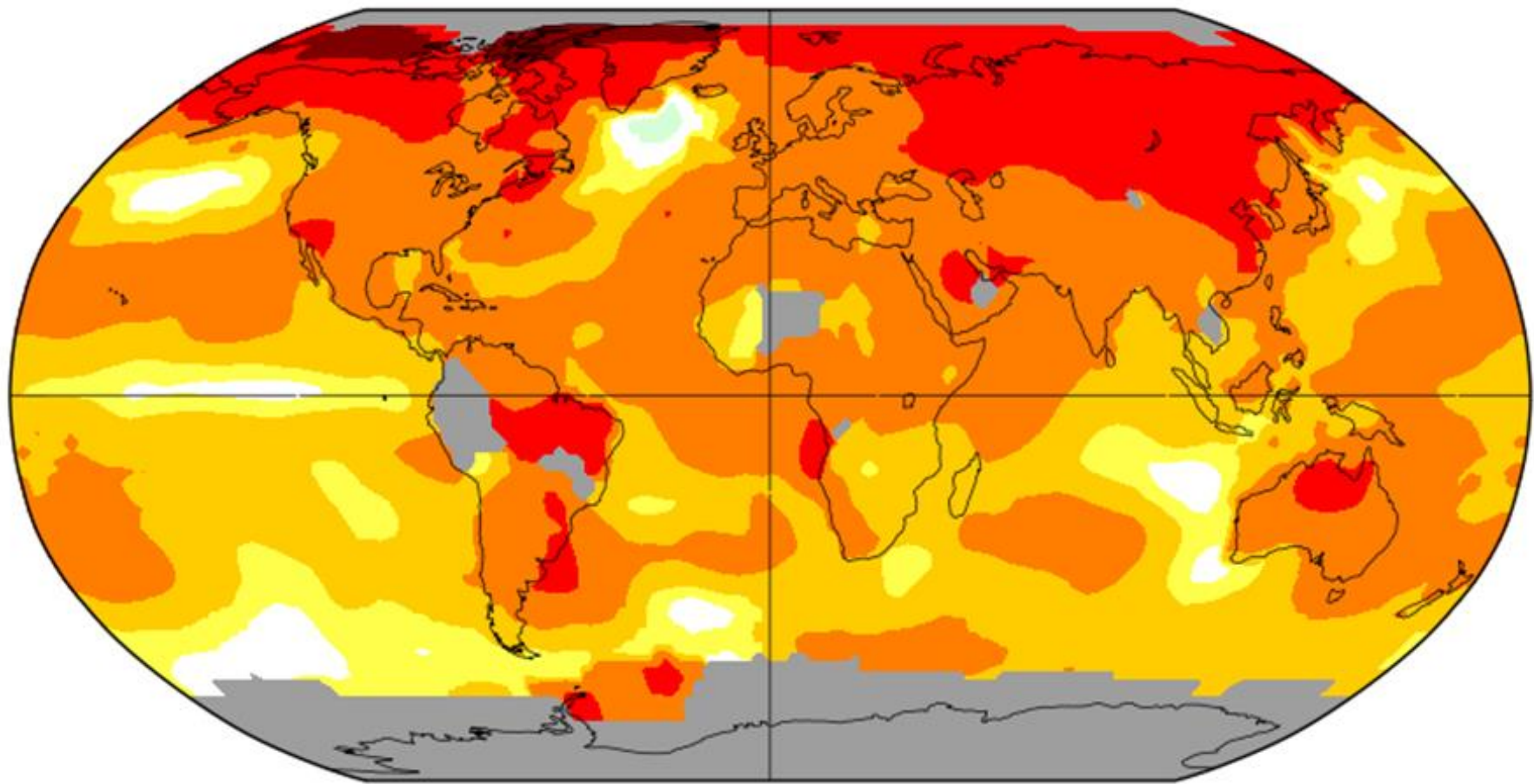


2017 Global Warming 1.18°C (Annual Increase)

Annual J-D 2017

L-OTI(°C) Anomaly vs 1881-1920

1.18



Source: NASA GISS, Surface Temperature Surface Temperature Analysis

COUNTRIES THAT JOINED THE PARIS CLIMATE AGREEMENT



SIGNED **RATIFIED** **INTENTION TO WITHDRAW** **NO DATA**

NOTE: Map is updated as of January 7, 2019

SOURCE: UNFCCC

Thank you!

David W. Cash, Ph.D.

Dean

John W. McCormack Graduate School of Policy and Global Studies

University of Massachusetts Boston

100 Morrissey Blvd.

Boston, MA 02125-3393 USA

Office: +1-617-287-5511

Cell: +1-617-794-9431